

Conferência  
Científica  
Internacional

Amazônia em Perspectiva  
Ciência Integrada para um Futuro Sustentável

LBA  
GEOMA  
PPBio



## Yellow Route - Distrito Indl.

Bus Schedule:

**MORNING:** Sep, 17,18,19,20

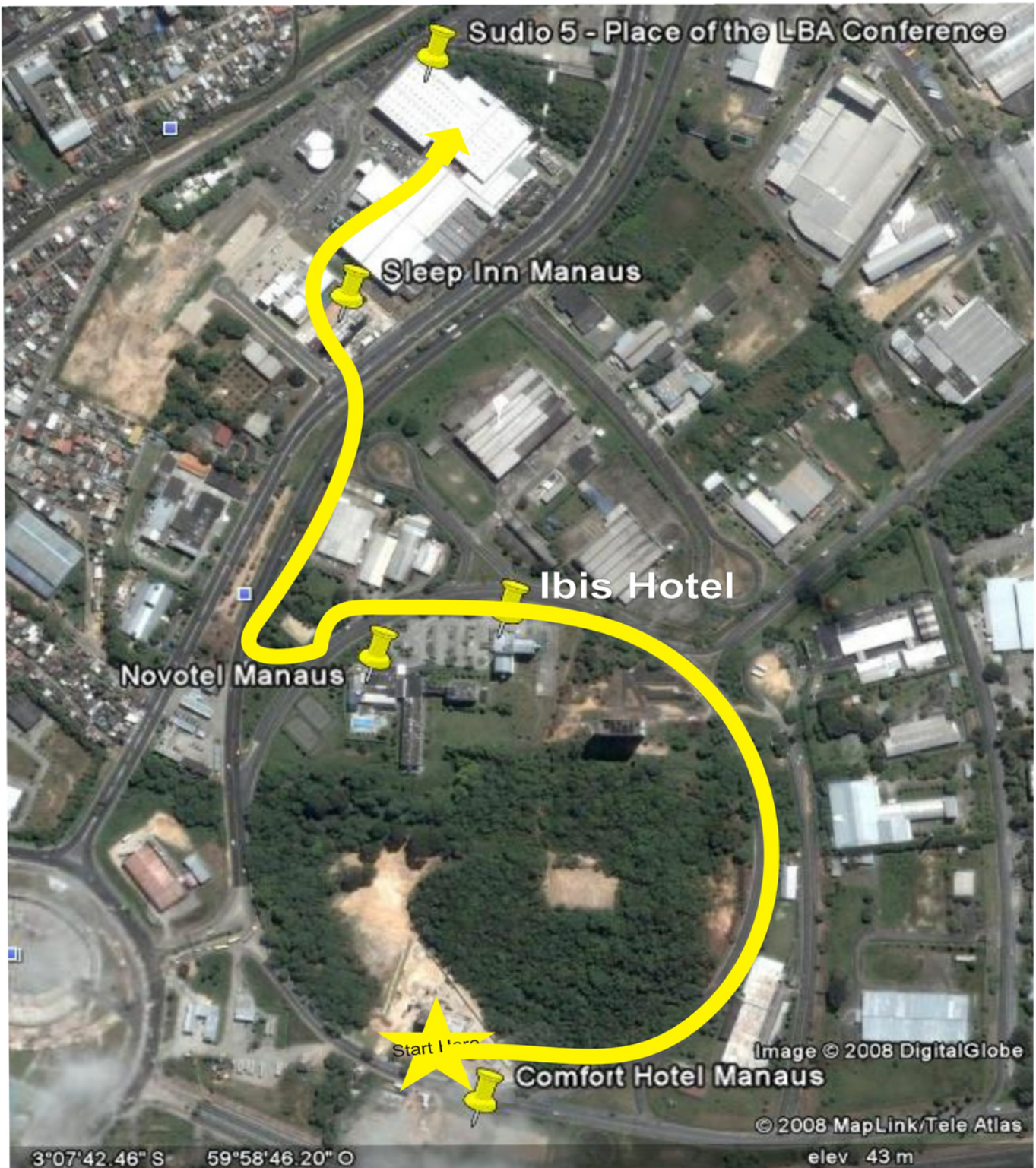
Hotels/Conference - 7:15am - 7:30am - 8am

Conference/CCPA - Sep, 17 - 5:20pm - 5:40pm - 6pm

CCPA/Hotels - Sep, 17 - 8pm - 8:30pm

**EVENING:** Sep, 18,19,20

Conference/Hotels: 6:30pm - 6:45pm - 7pm



1. Buses will stop 5 minutes for pick-up in front of each hotel.
2. The official Conference Opening on Nov 17 will take place at the Centro Cultural. Buses will leave Studio 5 to that location at 5:20pm. Buses will return from Centro Cultural to hotels at 8:00pm and 8:30pm.